



WE OFFER

PERFECT MIXING TECHNOLOGIES



PERMIX PADDLE MIXERS:
PRECISION MIXING FOR
EVERY INDUSTRY

WWW.PERMIXTEC.COM



PerMix Paddle Mixers & Vacuum Paddle Mixers-Dryers

Gentle Yet Efficient. Engineered for Performance. Built by PerMix.

What is a Paddle Mixer?

A Paddle Mixer is a gentle, slow-speed batch mixer designed for blending fragile, friable, or shear-sensitive materials. It features overlapping paddles mounted on a horizontal shaft that rotate to create a convective mixing action, folding and lifting materials for uniform mixing without degrading the product.

Ideal for applications where maintaining product integrity is critical, paddle mixers are often used in food, nutraceuticals, pharmaceuticals, and other industries that require sanitary, uniform mixing.

Why Choose a Paddle Mixer?

Paddle mixers are selected for applications where:

- Low-shear mixing is essential
- Product degradation must be avoided
- Fragile or friable ingredients are present
- Uniform mixing of powders, granules, and small amounts of liquids is needed
- Sanitary design is required for food or pharma applications



Paddle Mixers Vs. Ribbon & Plow Mixers

Compared to ribbon and plow mixers, paddle mixers offer a more delicate blending action with lower energy consumption. They are not as fast or aggressive but excel in applications where gentle handling is key and thorough mixing is still required.



Applications & Industries

Food

Cereals, vegetables, salad mixes, spices, ready meals

Pharmaceuticals

Vitamins, powdered APIs, sensitive blends

Nutraceuticals

Protein powders, functional blends, botanicals

Cosmetics

Mineral powders, exfoliants, clays

Pet Food

Supplements, custom formulations

Chemical

Additives, polymers, detergents

Introducing PerMix Vacuum Paddle Mixer-Dryers

PerMix Vacuum Paddle Mixer-Dryers combine the gentle mixing capabilities of paddle mixers with the power of vacuum drying. They feature full vacuum-rated construction, ASME-certified jackets for heating and cooling, and optional condensate recovery systems. Integrated choppers, spray nozzles, and CIP systems enhance their versatility.

Key Design Features & Options

Capacities from 5 to 30,000 liters and up

Construction Materials: 304 / 316L Stainless Steel, Carbon Steel, Hardox, Titanium, Hastelloy

CIP Ready and EZ-Clean Access

ASME Heating & Cooling Jackets

Vacuum & Pressure Rated Designs

Integrated Choppers & Spray Nozzles for Liquid Additives

Steam Injection Capability

PLC/HMI Controls with Recipe Management & Load Cells



Applications & Industries

Gentle mixing for shear-sensitive materials

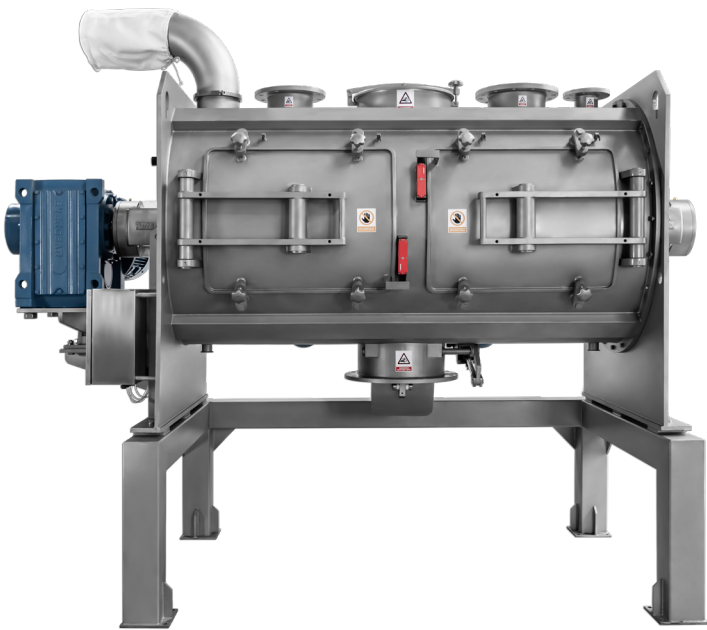
Highly uniform mixing with low energy consumption

Compatible with liquids and solids

Ideal for sanitary applications

Broad customizations options

Robust design for continuous operation



Considerations & Disadvantages

Not suitable for aggressive mixing or agglomerate breaking

Longer mix times compared to plow or ribbon mixers

May not fluidize light materials without customization

The PerMix Advantage

Precision Engineering for Every Batch Size

Global Manufacturing - Local Support

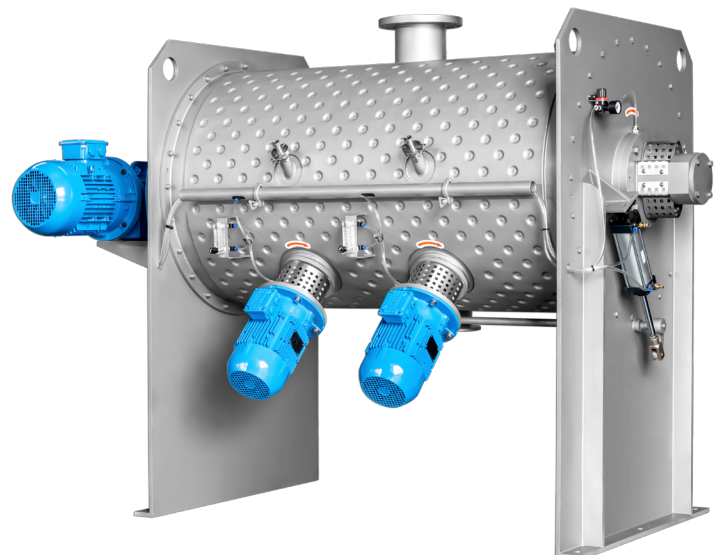
Best-in-Class Warranty - Up to 5 Years

Advanced Sanitary Design - Meets FDA & GMP Requirements

Built to Handle Today's Products and Tomorrow's Innovations

Let's Create the Perfect Paddle Mixer for Your Process

Whether you're drying botanical powders or blending prepared meals, PerMix's Paddle Mixer and Vacuum Paddle Mixer-Dryer solutions are built to meet your exact specifications and industry requirements. From lab-scale to full production, we offer unmatched customization, quality, and value.



Specifications

PerMix Paddle Mixer

Model	Total L	Useful L, 30%	Useful L, 70%	kW	RPM	L (mm)	W (mm)	H (mm)	KG
PTP-5L	5	1.5	3.5	1.1	365	900	400	600	110
PTP-10L	10	3	7	1.1	365	950	400	600	120
PTP-15L	15	4.5	10.5	1.1	280	1,050	450	620	140
PTP-20L	20	6	14	1.1	280	1,150	500	650	160
PTP-5L-CP	5	1.5	3.5	1.1	365	950	750	610	140
PTP-10L-CP	10	3	7	1.1	365	1,050	750	610	160
PTP-15L-CP	15	4.5	10.5	1.1	280	1,150	850	640	180
PTP-20L-CP	20	6	14	1.1	280	1,250	900	670	200
PTP-30	30	9	21	1.1	90	940	800	1,130	250
PTP-45	45	13.5	31.5	1.1	90	940	850	1,160	260
PTP-50	50	15	35	1.5	80	1,000	900	1,200	350
PTP-60	60	18	42	1.5	80	1,000	950	1,200	450
PTP-70	70	21	49	1.5	63	1,150	980	1,250	550
PTP-100	100	30	70	1.5	63	1,300	1,050	1,280	600
PTP-150	150	45	105	2.2	60	1,450	1,100	1,300	650
PTP-200	200	60	140	2.2	53	1,590	1,140	1,370	700
PTP-250	250	75	175	3	50	1,700	1,160	1,400	750
PTP-300	300	90	210	3	50	1,755	1,180	1,460	800
PTP-400	400	120	280	4	50	1,850	1,200	1,500	950
PTP-500	500	150	350	4	50	1,990	1,280	1,570	1,050
PTP-600	600	180	420	5.5	50	2,100	1,300	1,600	1,150
PTP-700	700	210	490	5.5	50	2,200	1,350	1,650	1,200
PTP-750	750	225	525	5.5	50	2,250	1,370	1,670	1,240
PTP-800	800	240	560	7.5	45	2,350	1,400	1,350	1,350
PTP-1000	1000	300	700	7.5	35	2,410	1,450	1,360	1,450
PTP-1200	1200	360	840	11	35	2,550	1,500	1,380	1,650
PTP-1500	1500	450	1050	11	35	2,780	1,590	1,410	1,850
PTP-2000	2000	600	1400	15	35	3,020	1,700	1,550	2,550
PTP-2500	2500	750	1750	18.5	35	3,100	1,800	1,700	2,800

- Mixers can be made to have a total volume of up to 30,000 L.

Specifications



PerMix Continuous Paddle Mixer

Model	Total L	Working L, 50%	kW	RPM	L	W	H	KG
PTPC-80	80	40	2.2	88	1900	700	700	500
PTPC-100	100	50	2.2	88	1920	850	750	700
PTPC-150	150	75	3	84	1950	950	800	900
PTPC-200	200	100	4	74	1960	1065	830	1100
PTPC-250	250	125	4	70	2200	1150	850	1200
PTPC-300	300	150	5.5	70	2400	1200	880	1250
PTPC-400	400	200	5.5	70	2510	1250	920	1300
PTPC-500	500	250	7.5	70	2800	1250	1010	1400
PTPC-600	600	300	7.5	70	2845	1290	1010	1500
PTPC-700	700	350	7.5	70	2900	1380	1050	1600
PTPC-750	750	375	7.5	70	2980	1400	1080	1750
PTPC-800	800	400	11	63	3200	1410	1100	1900
PTPC-1000	1000	500	11	49	3320	1430	1120	2000
PTPC-1200	1200	600	15	49	3500	1450	1200	2250
PTPC-1500	1500	750	15	49	3750	1470	1230	2400
PTPC-2000	2000	1000	18.5	49	4030	1650	1360	2800
PTPC-2500	2500	1250	22	49	4500	1680	1400	3200
PTPC-3000	3000	1500	22	49	4710	1700	1410	3500
PTPC-4000	4000	2000	30	42	5155	1910	1550	4800
PTPC-5000	5000	2500	37	42	5500	1940	1680	5500
PTPC-6000	6000	3000	37	42	5745	1960	1780	5900
PTPC-7000	7000	3500	45	38	6100	2080	1850	6800
PTPC-8000	8000	4000	45	38	6315	2160	1900	7800
PTPC-9000	9000	4500	55	31	6600	2200	1980	8400
PTPC-10000	10000	5000	55	31	6905	2230	2000	8900

Specifications

PerMix Vacuum Paddle Mixers & Dryer

Model	Total L	Useful L, 30%	Useful L, 70%	kW	RPM	L (mm)	W (mm)	H (mm)	KG
PTPD-5L	5	1.5	3.5	1.1	256	900	520	600	140
PTPD-10L	10	3	7	1.1	256	950	520	600	160
PTPD-15L	15	4.5	10.5	2.2	196	1050	550	620	180
PTPD-20L	20	6	14	2.2	196	1150	600	650	210
PTPD-5L-CP	5	1.5	3.5	1.1	256	950	900	610	180
PTPD-10L-CP	10	3	7	1.1	256	1050	900	610	210
PTPD-15L-CP	15	4.5	10.5	2.2	196	1150	1000	640	230
PTPD-20L-CP	20	6	14	2.2	196	1250	1050	670	260
PTPD-30	30	9	21	2.2	63	940	1000	1130	330
PTPD-45	45	14	32	2.2	63	940	1110	1160	340
PTPD-50	50	15	35	3	56	1000	1200	1200	460
PTPD-60	60	18	42	3	56	1000	1250	1200	590
PTPD-70	70	21	49	3	44	1150	1270	1250	720
PTPD-100	100	30	70	3	44	1300	1030	1280	780
PTPD-150	150	45	105	4	42	1450	1100	1300	850
PTPD-200	200	60	140	4	37	1590	1140	1370	910
PTPD-250	250	75	175	5.5	35	1750	1160	1400	980
PTPD-300	300	90	210	5.5	35	1825	1180	1460	1040
PTPD-400	400	120	280	7.5	35	1900	1200	1500	1240
PTPD-500	500	150	350	7.5	35	2010	1330	1570	1370
PTPD-600	600	180	420	11	35	2200	1350	1600	1500
PTPD-700	700	210	490	11	35	2300	1400	1650	1560
PTPD-750	750	225	525	11	35	2355	1500	1670	1610
PTPD-800	800	240	560	15	32	2400	1550	1350	1760
PTPD-1000	1000	300	700	15	25	2500	1600	1360	1890
PTPD-1200	1200	360	840	18.5	25	2650	1680	1380	2150
PTPD-1500	1500	450	1050	18.5	25	2850	1710	1415	2410
PTPD-2000	2000	600	1400	22	25	3020	1920	1550	3320
PTPD-2500	2500	750	1750	30	25	3100	2300	1700	3640

- Mixers can be made to have a total volume of up to 30,000 L.



Headquarter

PerMix Israel

Adi 17940, Israel
Contact: Mr. Arie Srugo
Tel: +972-54-908-0144
Email: srugoa@permixtec.com
www.permixtec.com

Global Factory & Office

PerMix North America (Factory)

Chicago, Illinois, 60601, USA
Contact: Mr. John Paul
Tel: +1 630-649-1357
Email: John.paul@permixtec.com
www.permixmixers.com

PerMix Europe (Factory)

9900 Eeklo - Belgium
Contact: Mr. Dimitri Baeten
Tel: +32 9 430 50 17
Email: dimitri.eu@permixtec.com
www.permixmixers-eu.com

PerMix China (Factory)

Shanghai, 201821, China
Contact: Mr. Aaron Huang
Tel: +86 133 911 68218
Email: aaron.h@permixtec.com
www.permix.cn

PerMix India

Navi Mumbai, 400 708, India
Contact: Mr. Anant Wagh
Tel: +91 99304 69228
Email: india@permixtec.com
www.permixmixers.in

PerMix UK

Scotland, Great Britain
Contact: Mr. James Ryder
Tel: +44 (0) 7554139667
Email: james.ryder@permixtec.com
www.permixmixers.co.uk

PerMix Ukraine

Kyiv, 02095, Ukraine
Contact: Mr. Viacheslav Pishyi
Tel: +38 067 45 44 694
Email: ua@permixtec.com
www.permixtec.com

Besides, PerMix has been building a network of agents located in Southeast Asia, Australia, Russia, Middle East, Africa, and other countries & regions.